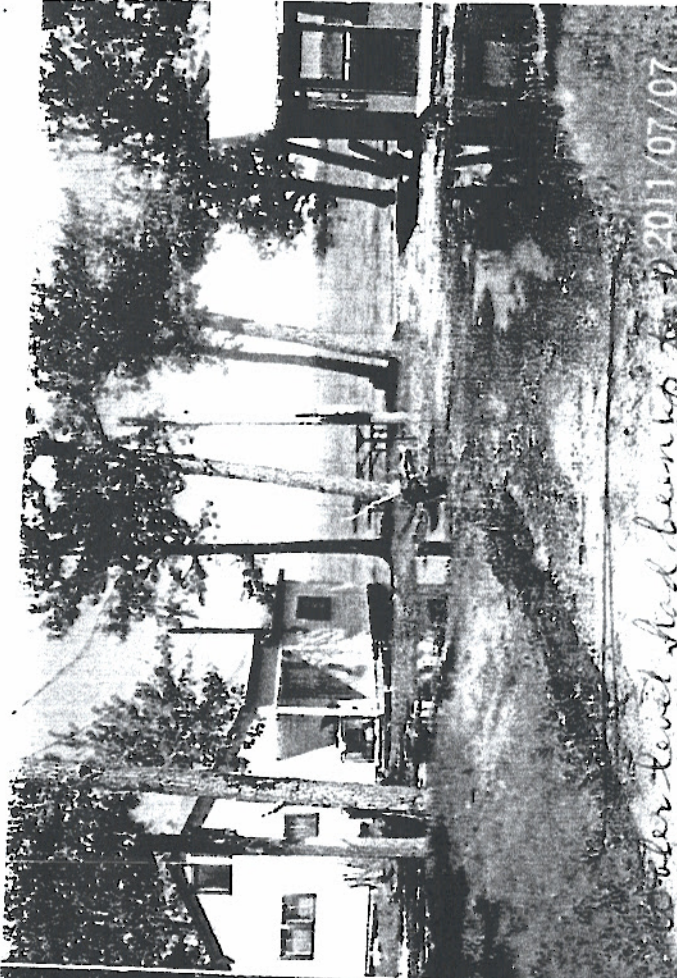


2010 looks before in the my house to hit water out of South St. 17.0 R.

see summary of Eshelby Asset on Switch So. The re

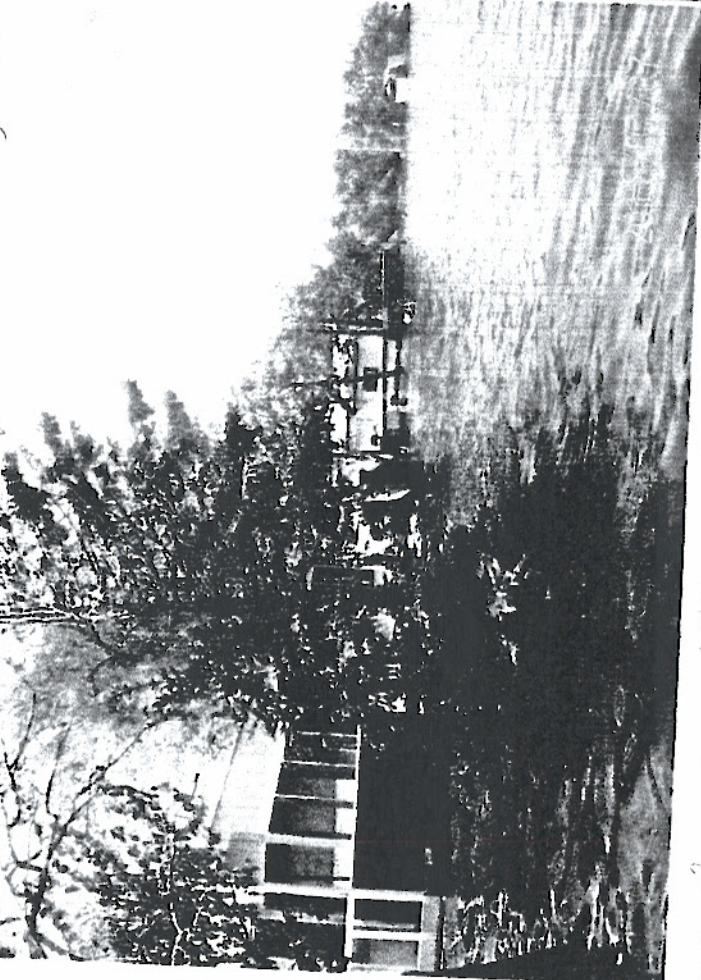


2011/07/07



water level had been up to 2011/07/07

with new proposal (for 5538.00) what will 2012 bring for this area?



2011/07/07

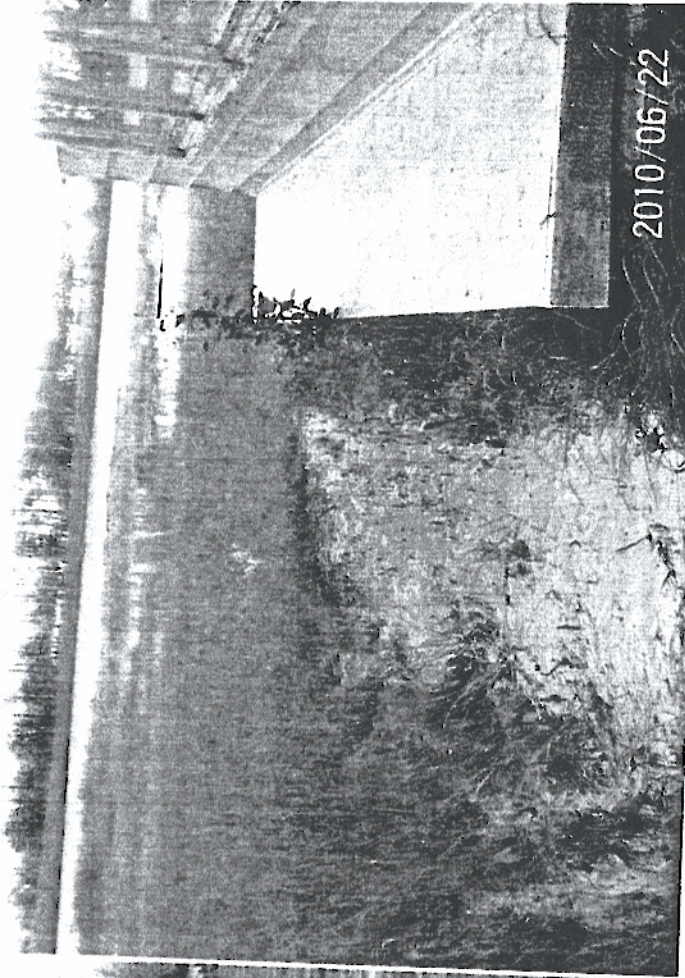


2011/07/07

2011 Road to 17th walking about T and this is the level of water in 2011



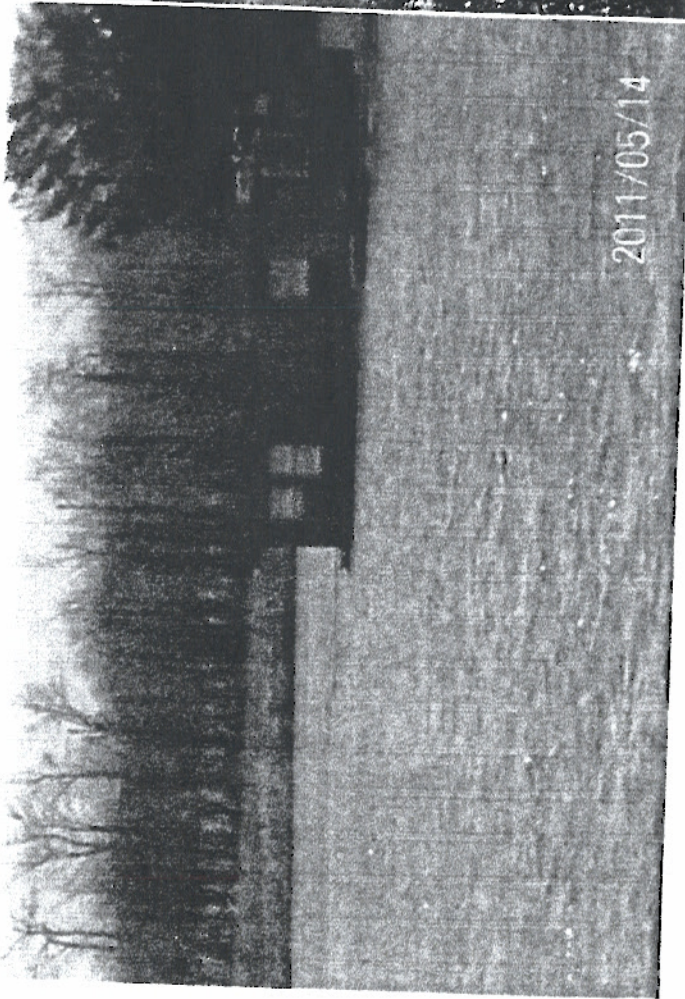
2011/05/14



2010/06/22

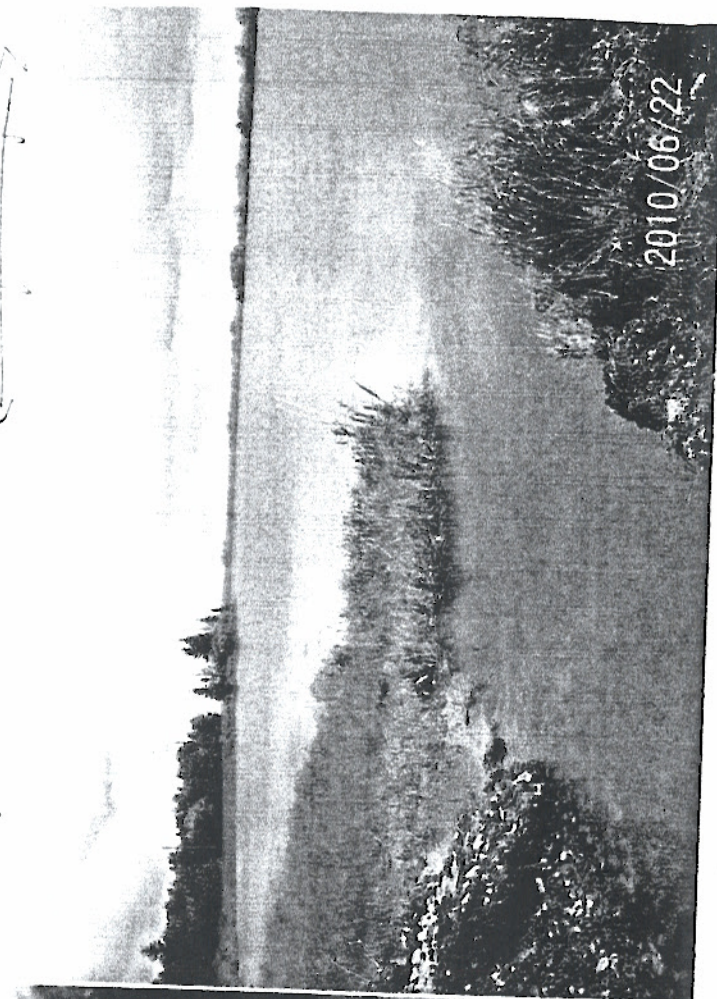
Photo shows low, current only flowing at 1/3

5' deep and under 35% of full. →



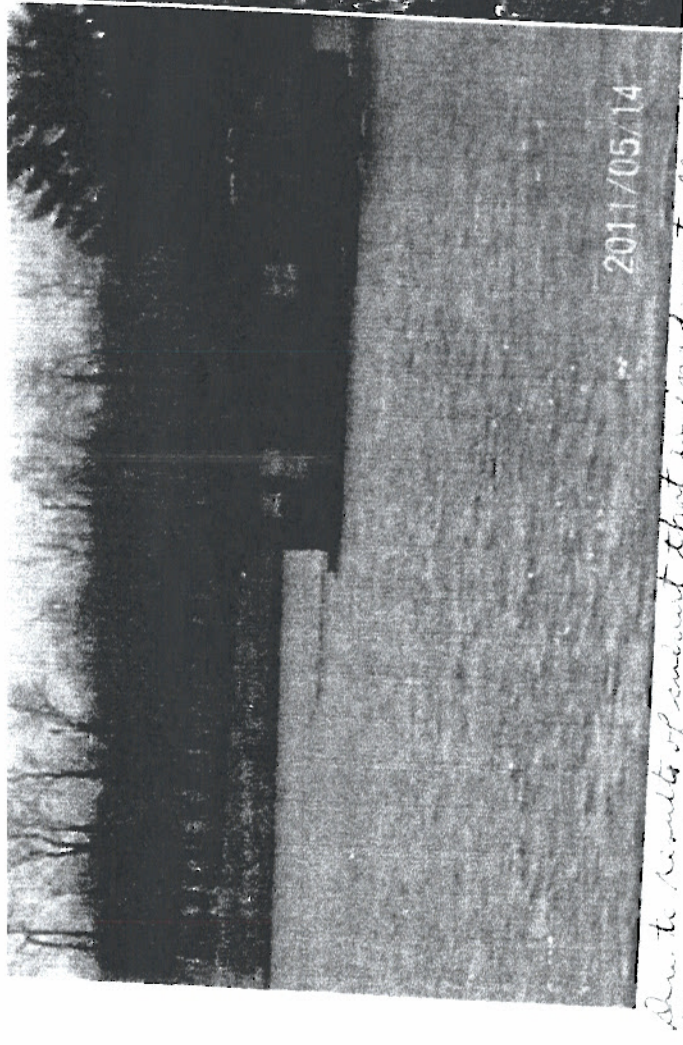
2011/05/14

Caution, water is to flood



2010/06/22

Notice stream is 1/3 full



2011/05/14

Due to amount of rainfall that is inadequate flooding
occurred and will subside soon. If it is subnormal

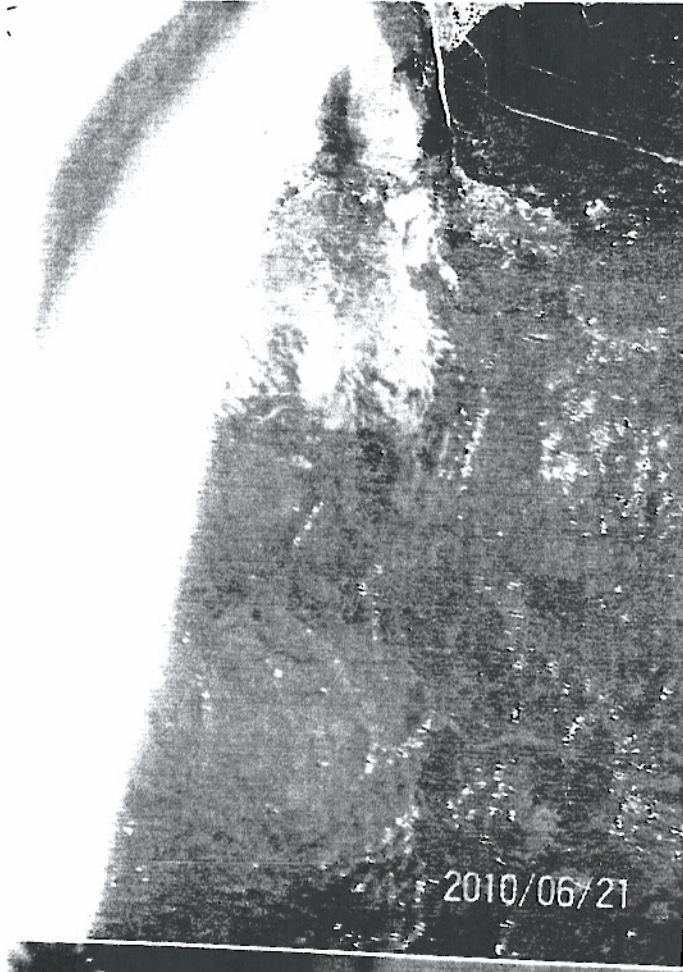


2011/05/14

How frequent smaller 30" and raised higher in road
than any rain at 1/4 amount until more high the water
went out. The road

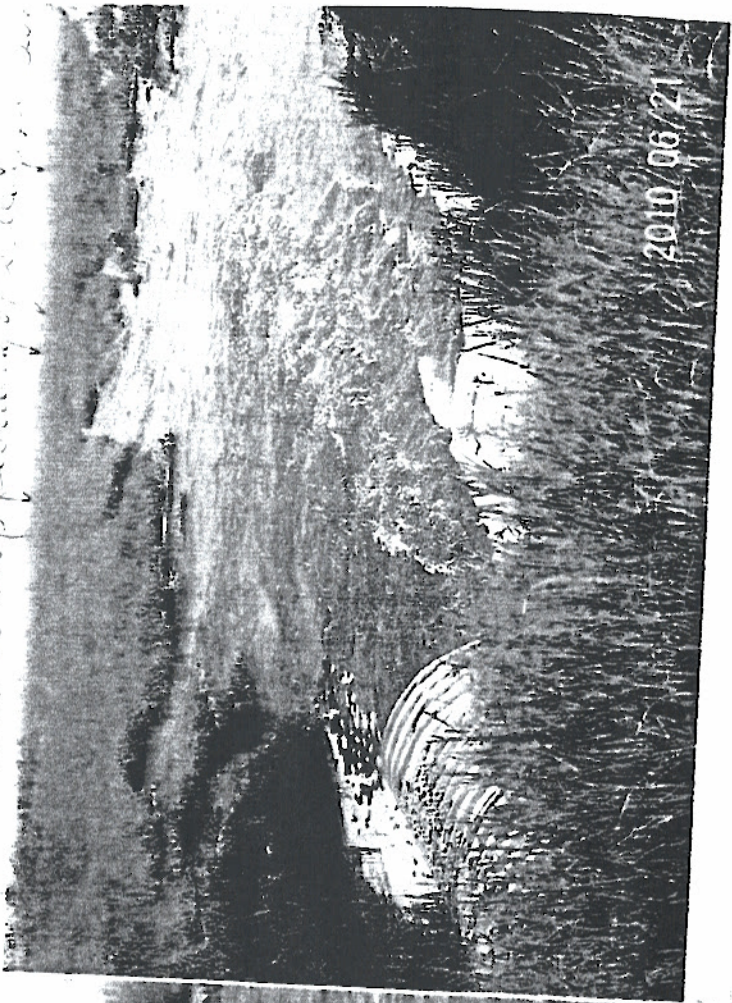
Drainage Station S. 7. 8. 1. 2. 3. 4. 5.

Not accurate



2010/06/21

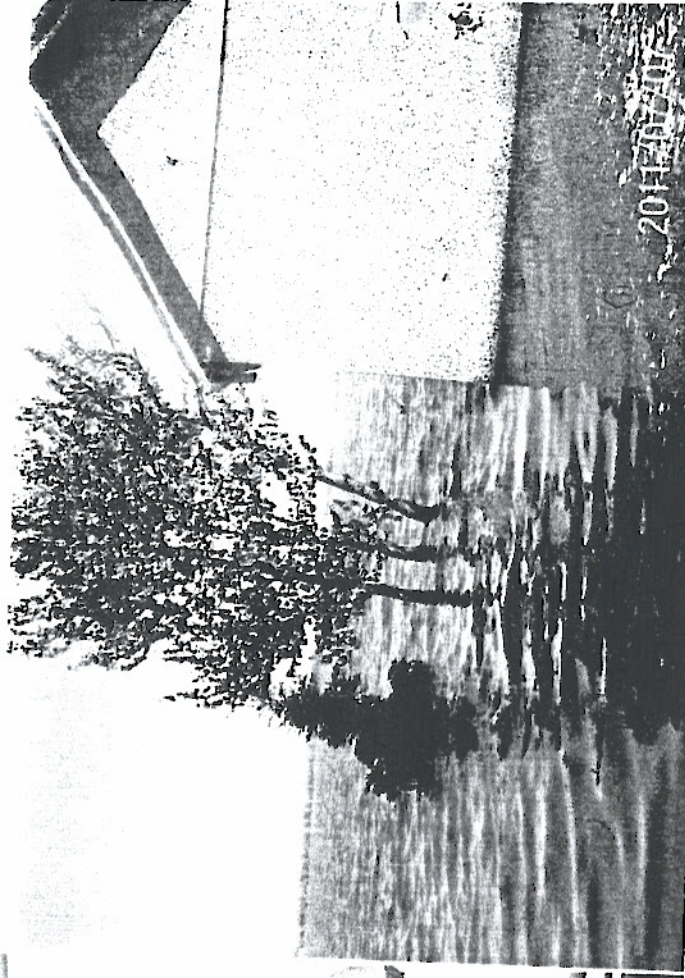
water flowing at 1/4 of amount and very fast
some boat at top part of drainage



2010/06/21



*Tom
and
Linda*



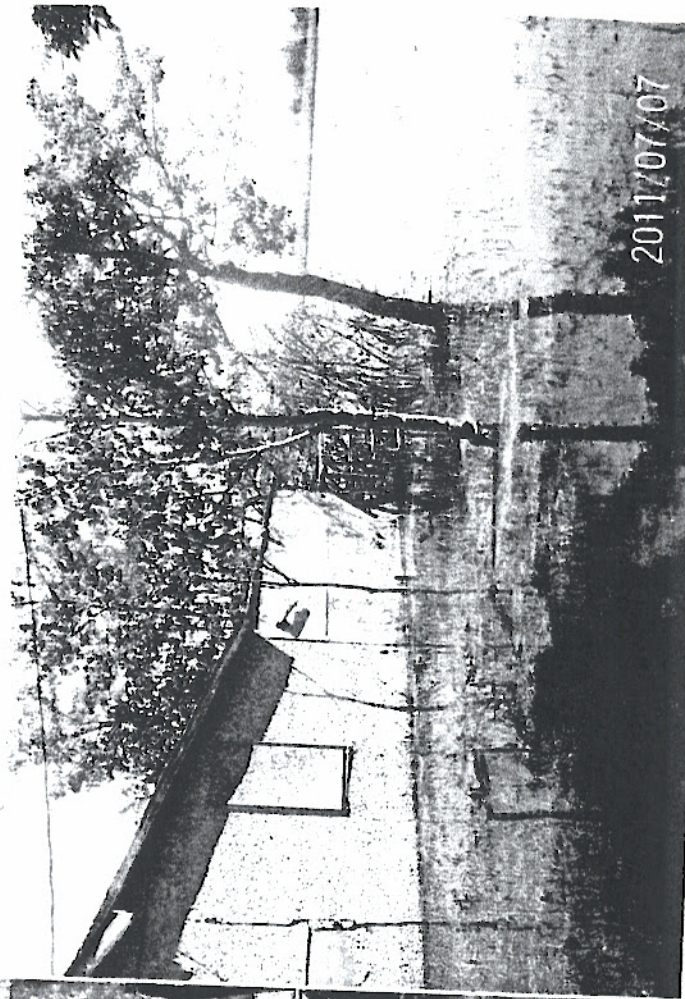
2011/07/07

While its going to reimburse us for our loss.



2011/07/07

*Tom
and
Linda*



2011/07/07